

Schedule 1

Item 1 Description of Agreement Area

A. External boundary description

The agreement area covers all the land and waters within that part of Lot 5213 on Plan PH1110 (Jandell) and of Lot 5 on SP126466 (Kyeenee) located within the Native Title Determination Application QUD53/2007 Budjiti People (QC2007/002), further described as that part of those lots southwest of the line described by the following coordinate points:

Longitude° East	Latitude° South
144.316390	27.694982
144.317077	27.687880
144.317073	27.686700

then generally south easterly to a point 3.8km south-east of the locality of Jandell through the following coordinate points:

Longitude° East	Latitude° South
144.317073	27.686700
144.395150	27.770780
144.438022	27.806769
144.472591	27.832120

then following the cliff face to the edge of the pass (Longitude 144.480270°E, Latitude 27.867477°S) between this and the adjacent set of cliffs; then southerly across the unnamed creek in a straight line to that set of cliffs at Latitude 27.871088°S; again following that cliff face to its southernmost point at Longitude 144.969746°E, Latitude 27.876293°S; then south easterly across the unnamed creek in a straight line to the next adjacent set of cliffs at Longitude 144.472906°E, Latitude 27.878458°S; again following the cliff face to its southernmost point at Longitude 144.473743°E, Latitude 27.883858°S; then generally south easterly through the following coordinate points:

Longitude° East	Latitude° South
144.476048	27.888583
144.483538	27.890888
144.494465	27.898343
144.541671	27.932153
144.549326	27.937894
144.551240	27.944274
144.553154	27.950015
144.559533	27.962773
144.564637	27.971704

Note

Reference datum

Geographical coordinates have been provided by the NNTT Geospatial Unit and are referenced to the Geocentric Datum of Australia 1994 (GDA94), in decimal degrees and are based on the spatial reference data acquired from the various custodians at the time.

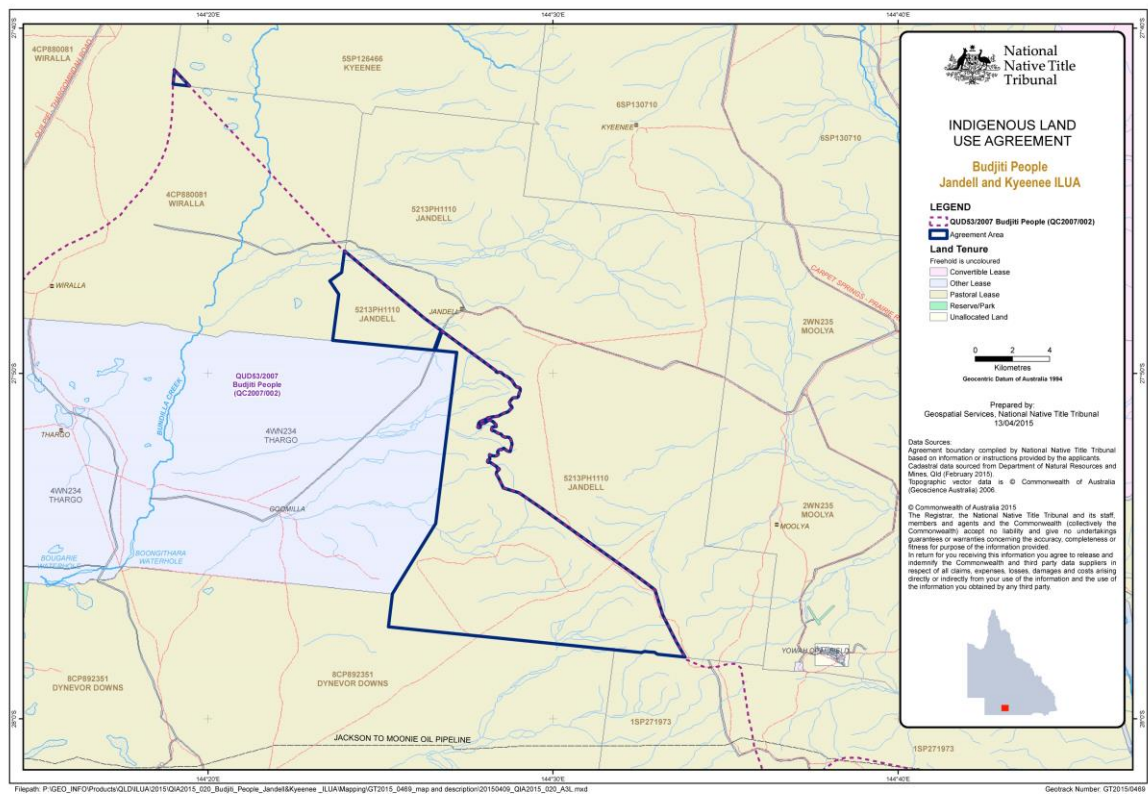
Data Reference and source

- Agreement boundary compiled by National Native Title Tribunal based on information or instructions provided by the applicants.
- Native title determination application QUD53/2007 Budjiti People (QC2007/002) as accepted for registration on 10 July 2007.
- Cadastre data sourced from Department of Natural Resources and Mines, Qld (February, 2015).
- Rivers / Creeks based on cadastral data.

Use of Coordinates

Where coordinates are used within the description to represent cadastral or topographical boundaries or the intersection with such, they are intended as a guide only. As an outcome to the custodians of cadastral and topographic data continuously recalculating the geographic position of their data based on improved survey and data maintenance procedures, it is not possible to accurately define such a position other than by detailed ground survey.

B. Map



Item 2 Description of Lease

Pastoral Holding 15/5213 comprising Lot 5213 on PH1110

Preferential Pastoral Holding 215419 comprising Lot 5 on SP126466

Item 3 Description of Lessee

Brian Sidney Betts, Jill Elizabeth Betts and Brian John Betts